

### OVALYN™ UNDERCOUNTER SINK

- Classic oval undermount sink
- Made from vitreous china
- Front overflow
- Supplied with mounting kit (047194-0070A) and template

**0495.221 Unglazed rim**

435 x 359mm  
(17-1/8" x 14-1/8")

**0495.300 Glazed underside**

**Bowl size:**

382mm (15-1/16") wide  
306mm (12-1/16") front to back  
140mm (5-1/2") deep

**0496.221 Unglazed rim**

489 x 413mm  
(19-1/4" x 16-1/4")

**0496.300 Glazed underside**

**Bowl size:**

432mm (17") wide  
356mm (14") front to back  
140mm (5-1/2") deep

**0497.221 Unglazed rim**

546 x 441mm  
(21-1/2" x 17-3/8")

**0497.300 Glazed underside**

**Bowl size:**

483mm (19") wide  
391mm (15-3/8") front to back  
140mm (5-1/2") deep

**Compliance Certifications -**

**Meets or Exceeds the Following Specifications:**

- ASME A112.19.2M for Vitreous China Fixtures
- CAN/CSA B45 series

**To Be Specified:**

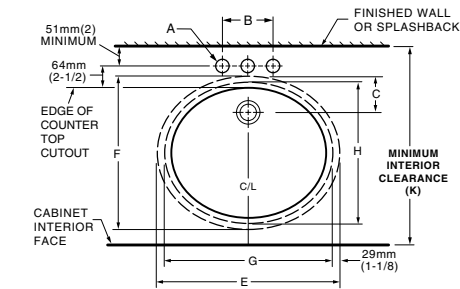
- Color:  White  Bone  Linen  
 Silver  Fawn Beige  Black
- Faucet\*:  
 Faucet Finish:  
 Supplies:  
 1-1/4" Trap:

\* See faucet section for additional models available

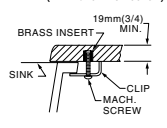


SEE REVERSE FOR ROUGHING-IN DIMENSIONS

## 0496/0497



### ▼ DETAIL OF MOUNTING CLIP (KIT No. 047194-0070A)



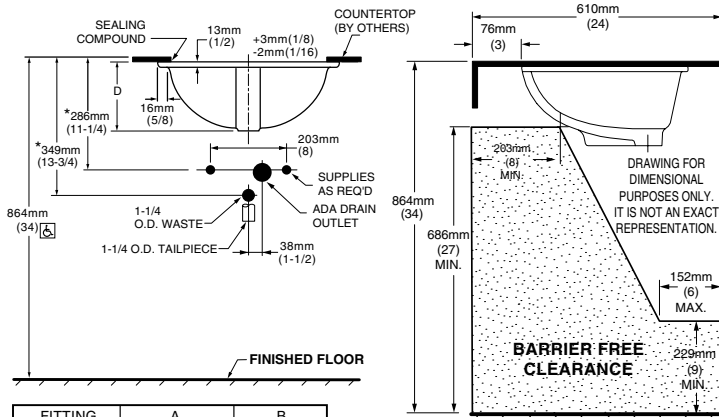
REFER TO INSTRUCTIONS PROVIDED WITH KIT FOR ADDITIONAL INFORMATION

### NOTES:

\* DIMENSIONS SHOWN FOR LOCATION OF SUPPLIED AND "P" TRAP ARE SUGGESTED.

▼ UNDERCOUNTER MOUNTING KIT SUPPLIED WITH SINK. PLEASE NOTE MINIMUM INTERIOR CLEARANCE DIMENSION (K). FITTINGS NOT INCLUDED AND MUST BE ORDERED SEPARATELY. USE ENCLOSED TEMPLATE FOR COUNTERTOP CUTOUT SEALING COMPOUND SUPPLIED BY OTHERS.

**IMPORTANT:** Dimensions of fixtures are nominal and may vary within the range of tolerances established by ANSI Standard A112.19.2. These measurements are subject to change or cancellation. No responsibility is assumed for use of superseded or voided pages.



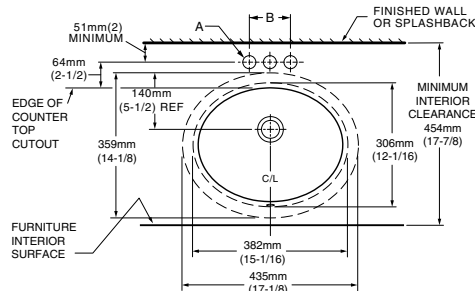
**MEETS THE AMERICANS WITH DISABILITIES ACT GUIDELINES AND ANSI A117.1 ACCESSIBLE AND USEABLE BUILDINGS AND FACILITIES - CHECK LOCAL CODES.**

Countertop 864mm (34") from finished floor. Lavatory installed 76mm (3") from front edge of countertop. Countertop thickness to be 25mm (1") maximum.

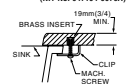
| FITTING   | A            | B         |
|-----------|--------------|-----------|
| CENTERSET | 1-1/4 (32mm) | 4 (102mm) |
| SPREAD    | 1-3/8 (35mm) | 8 (203mm) |

| CAT. NO. | E              | F              | G          | H              | C              | D              | J          | K                |
|----------|----------------|----------------|------------|----------------|----------------|----------------|------------|------------------|
| 0496.221 | 489mm (19-1/4) | 413mm (16-1/4) | 432mm (17) | 356mm (14)     | 103mm (4-1/16) | 182mm (7-3/16) | 16mm (5/8) | 500mm (19-11/16) |
| 0497.221 | 546mm (21-1/2) | 441mm (17-3/8) | 483mm (19) | 391mm (15-3/8) | 95mm (3-3/4)   | 191mm (7-1/2)  | 19mm (3/4) | 534mm (21-1/16)  |

## 0495



### ▼ DETAIL OF MOUNTING CLIP (KIT No. 047194-0070A)



REFER TO INSTRUCTIONS PROVIDED WITH KIT FOR ADDITIONAL INFORMATION

| FITTING   | A            | B         |
|-----------|--------------|-----------|
| CENTERSET | 1-1/4 (32mm) | 4 (102mm) |
| SPREAD    | 1-3/8 (35mm) | 8 (203mm) |

### NOTES:

USE ENCLOSED TEMPLATE FOR COUNTER TOP CUTOUT. FITTINGS NOT INCLUDED WITH FIXTURE AND MUST BE ORDERED SEPARATELY.

\* DIMENSIONS SHOWN FOR LOCATION OF SUPPLIED AND "P" TRAP ARE SUGGESTED.

▼ UNDERCOUNTER MOUNTING KIT SUPPLIED WITH SINK. PLEASE NOTE MINIMUM INTERIOR CLEARANCE DIMENSION (K). SEALING COMPOUND SUPPLIED BY OTHERS.

**IMPORTANT:** Dimensions of fixtures are nominal and may vary within the range of tolerances established by ANSI Standard A112.19.2. These measurements are subject to change or cancellation. No responsibility is assumed for use of superseded or voided pages



**MEETS THE AMERICANS WITH DISABILITIES ACT GUIDELINES AND ANSI A117.1 ACCESSIBLE AND USEABLE BUILDINGS AND FACILITIES - CHECK LOCAL CODES.**

Countertop 864mm (34") from finished floor. Lavatory installed 51mm (2") from front edge of countertop. Countertop thickness to be 25mm (1") maximum.

